



KR6 Scarifier

No matter how you "kut" it, the Kut-Rite KR6 Scarifier is a light weight tool that every contractor should have in their tool box. Consider the KR6 for light duty surface preparation, removal of paints, thin mil coatings, carpet and tile mastic, etc.



Features & Benefits

Extra-heavy construction for added stability and ballast.

Zero-depth height adjustment.

Drum centrally located under the motor for better balance and less vibration.

Side access drum assembly for quick and easy cutter changes.

2" vacuum port for virtually dust-free operation.

Compact Design

Push button emergency stop

Heavy-duty square shaft, sealed bearings and toothed belt.

www.kutritemfg.com

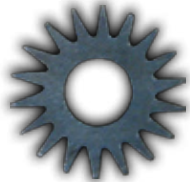
KR6 Scarifier



Steel

Result

Description

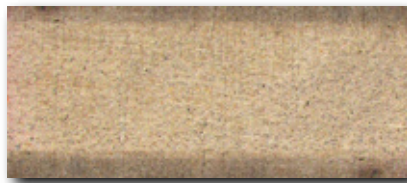
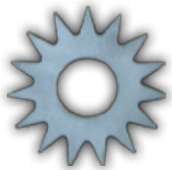


The KR6 equipped with the steel cutter is ideal for preparing concrete for a coating application and/or removal of various surface materials such as: carpet foam backing, adhesives, mastics, glues, chewing gum, rust from steel decks and some thin mil coatings.

Solid Carbide

Result

Description



The KR6 equipped with the solid carbide cutter is also ideal for preparing concrete for a coating application and/or removal of various surface materials such as: carpet foam backing, adhesives, mastics, glues, chewing gum and some thin mil coatings. The solid carbide will cut faster and last up to 10 times longer.

Models	HP	Power Source	Power Specs	Weight	Production sq ft
KR6E1.5	1.5	Electric	120 1PH 17.2FLA	85lbs	150-250/hr

All weights can vary based on cutter selection



Kut-Rite
27482 Northline Rd.
Romulus, MI 48174

www.kutritemfg.com

P:734.955.9311
P:877.786.5067 - Toll Free
F:734.955.9314